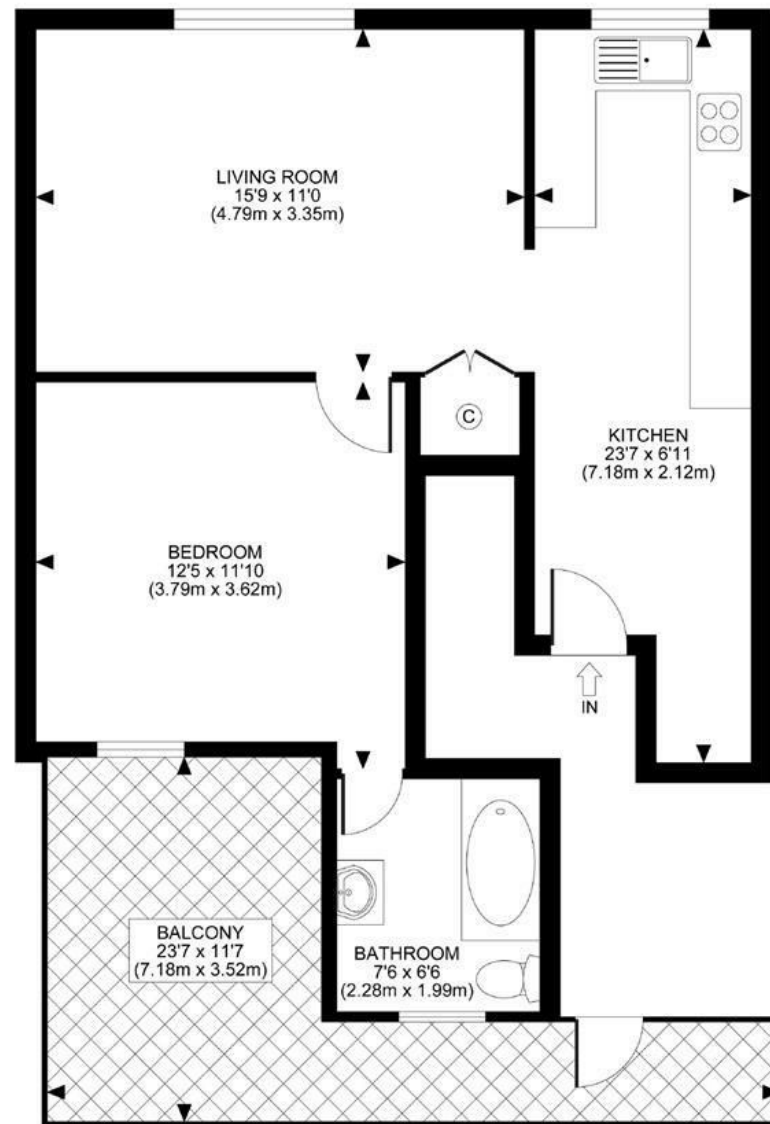


UPPER RICHMOND ROAD, SW15  
TOTAL APPROX. FLOOR PLAN AREA 528 SQ.FT (49 SQ.M.)



All measurements walls, doors, windows, fittings and their appliances, their size and locations are shown conventionally and are approximate only and cannot be regarded as being a representation either by the seller or his agent nor zentuvo  
www.zentuvo.co.uk

**DISCLAIMER**•These particulars are intended to give a fair and substantially correct overall description for the guidance of intending purchasers and do not constitute an offer or part of a contract. Prospective purchasers and/or lessees ought to seek their own professional advice.  
•All descriptions, dimensions, areas, references to condition and necessary permissions for use and occupation and other details are given in good faith and are believed to be correct, but any intending purchasers should not rely on them as statements or representations of fact, but must satisfy themselves by inspection or otherwise as to the correctness of each of them.  
•All measurements are approximate.



## Upper Richmond Road, Putney, SW15

A phenomenal and modern one bedroom apartment on the first floor of this recently renovated building in central Putney. Offered on an unfurnished basis and benefiting from a private terrace, the accommodation comprises a bright and spacious reception room with wood floors, fully fitted modern eat-in kitchen, double bedroom and luxury en suite bathroom. This stunning flat is located within a two minute walk of all the amenities and transport Putney has to offer. Available mid March 2026.



- MODERN FLAT
- EAT-IN KITCHEN
- EN SUITE BATHROOM
- WOOD FLOORS
- EPC C
- BRIGHT RECEPTION ROOM
- DOUBLE BEDROOM
- PRIVATE TERRACE
- CENTRAL LOCATION
- COUNCIL TAX BAND D

Per Calendar Month  
**£2,000 Per Calendar Month**



